

INTERNATIONAL FIGURE SKATING
COMPETITION



Volvo Open Cup 17th

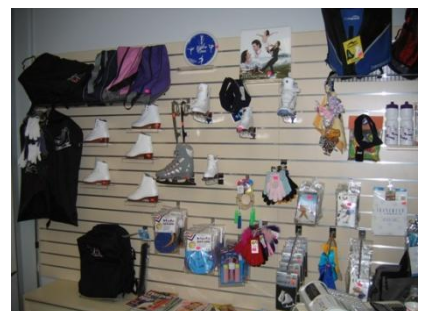
27.01-29.01.2012

Riga, Latvia

OUR PARTNERS:



*Skate Shop, Kristal Ice
Volvo Ledus Halle
Jurmālas Gatve 78 D,
Rīga, Latvija.*



ANNOUNCEMENT / INVITATION

ORGANIZER:

Figure Skating Club "Kristal Ice", Riga, Latvia
E-mail: Kristal_ice@hello.lv
Phone number: +371 29548461
Fax: +371 67408274
www.kristalice.lv

DATE:

2nd event
27.01.2012-29.01.2012

3^d event
4.05.2012-6.05.2012

PLACE OF COMPETITION:

[Volvo Ledus Halle](#), Jūrmalas gatve 78 D, Riga, Latvia.

ENTRIES for 2nd EVENT :

Volvo Open Cup is being held as an individual competition. All clubs, members of National Figure Skating Federations associated with the ISU, are invited to take part in this competition. Entries must contain competitor's full name, date of birth. The number of competitors is not limited. Organizer has a right to refuse or limit the participation in competition. Entries can be sent by e-mail on the address given below by 08 of January 2012. **The deadline for entries is 08.01.2012. Each club must confirm their final entry list on accreditation (mandatory).**
E-mail: Kristal_ice@hello.lv

RESPONSABILITY:

In accordance to ISU Constitution, rule 119, all participants act at their own responsibility.

PROTESTS:

Each team has the right to submit protest against the judges' decision. Protests must be submitted to the Referee of the relevant event at the latest immediately after the event. Upon

the submission of the protest a protest fee of 30 EUR must be paid. The referee's decision is final. In the new ISU Judging Systems no protests can be filed against the judges (see Rule 123), but against the right determination of the executed element or any calculation error. In the ISU Judging System protest can be submitted in 24 hours after subsegment (e.g. Short Program) and before the awarding ceremony after the final segment (e.g. Free Skating). Protest must be done in a written form to the referee of the relevant segment. Please read ISU Rule 123.

THE CODE OF ETHICS:

All the skaters, coaches, judges, chaperons should follow the ISU com. 1433. Action against this rule conducts behind itself the disqualification of skater.

MUSIC:

Music will be reproduced from CD player. CDs must be labeled with names of competitors, club and category which they participate. CDs must be delivered not later than one (1) hour before the start of relevant segment. Music must be placed on the music desk.

AWARDS:

The first three best placed competitors in each event will be awarded by cups, special presents and diplomas; others by diplomas and presents.

CHARGES:

ISU Judging System (All the B Class - special rules , see appendix.3)

– 50 EUR per participant.

ISU Judging System (Chicks – Basic Novice A&B Class) – 55 EUR per participant.

ISU Judging System (Novice & Junior&Senior) – 65 EUR per participant.

ISU Judging System (Adults A Class) – 60 EUR per participant

ISU Judging System Ice Dance – 80 EUR per couple.

6.0 Judging system (Beginners class) – 45 euro per participant

6.0 Judging system (Synchro. Teams) – 150 EUR per team.

Each club who is entering 10 and more skaters can bring one more (11th) participant free of charge (concerning to dance couples – 10 pairs and then 11th pair free of charge)

ENTRY FEE PAYMENT:

Entry payment must be paid with one (1) transaction for all the club participants. Deadline for payments 20.01.2012. You can change one skater for another in any category if it's paid already in period from entries deadline to 24 hours before the drawing. Organizer will not return entry fees but the participant's prize will be awarded to the canceled participant or him/her team. Each club who is entering 10 and more skaters can bring one more (11th) participant free of charge.

You will find account's details below :

Sia "Kristal Ice"
LV 40003763273
Jurmālas gatve 78 D ,Rīga,Latvia
DNB bank
LV21RIKO0002930054380 - account number for euro payments
S.W.I.F.T. RIKO LV 2X
LV21RIKO

ENTRIES MODIFICATION:

Each participating club may change their participant`s category latest in period from entries deadline to 7 days before the drawing. All changes submitted after the accreditation won`t be accepted.

JUDGES:

Each participating Club may nominate one, at least international level judge. In case of too many judge entries, the organizer will draw the panels of judges after the deadline. Final judge`s panels will be published.

JUDGING SYSTEM:

ISU Judging System will be used for participant in A class and Adult class.

ISU Judging System will be used for Ice Dance.

ISU Judging System will be used for participants in B class (special rules , see apendix.)

6.0 Judging System will be used for Beginners class

6.0 Judging System will be used for Syncro participants.

The panel of 5 judges will be used for Novice and Juniors, Seniors. All the other categories will have panel of 3 judges.

PLANNED PROGRAM CONTENTS:

All athletes who participate in A and B Class categories (ISU Judging system) must send their planned program contents by the 15.01.2012.

Planned Program Contents Sheets (see Appendix 2) must be filled according to ISU Nomenclature for season 2011/2012 (available on www.isu.org).

Please send them to: kristal_ice@hello.lv

CATEGORIES:

Single Skating

Pre-chicks (B Only)

Girls, Boys

born 2006 and younger

Free Program: Girls & Boys 2:00 min (± 10sek)

Chicks (A and B)

Girls, Boys

born 2004/2005

Free Program: Girls & Boys 2:00 min (± 10sek)

Cubs (A and B)

Girls, Boys

born 2002/2003

Free Program: Girls A 2:30 min (± 10sek)
Girls B 2:00 min (± 10 sek)
Boys 2:30 min (± 10 sek)

Springs (A and B) born 2000/2001
Girls, Boys Free Program: Girls 2:30 min (± 10 sek)
Boys 3:00 min (± 10sek)

Debs (B only) born 1998/1999
Girls, Boys Free Program: Girls 3:00 min (± 10 sek)
Boys 3:30 min (± 10 sek)

Novice Basic A and B
Girls,Boys Free Skating ISU communication 1649

Advanced Novice Advanced Novice class Short Program and Free Skating
Girls, Boys According to ISU regulations and active communication 1649

Novice B B class Free Program only

Juniors (A and B) Short Program and Free Skating
Girls, Boys According to ISU regulations and active communication 511,512

B class Free programm only

Seniors (A only) Short Program and Free Skating
Ladies and Men According to ISU regulations and active communication 511,512

Ice Dance

AdvancedNovice
Ice Dance Pattern Dance:
ISU judging system Free Dance: 3:00 min (± 10 sek)

Basic Novice Ice Dance Pattern Dance:
ISU judging system Free Dance: 2:30 min (± 10sek)

Junior Ice Dance Short Dance:2:50 min (± 10 sek)
ISU judging system Free Dance: 3:30 min (± 10 sek)

Seniors Ice dance Short Dance: 2:50 min(± 10 sek)
Free Dance: 4 min (± 10 sek)

Synchronized Skating

6.0 judging system

Novice Free Skating max. 3:30 min (± 10 sek)

Junior Short pr 2.50 ; free pr. 4+/-10 sec

Senior Short pr; Free pr;

BEGINNERS

6.0 Judging system

Beginners born 2001/2002 and younger
Girls, Boys Free Program: max. 2:00 min (± 10 sek)
(axel and double jumps are forbidden)

Beginners born 1999/2000
Girls, Boys Free Program: max. 2:00 min (± 10 sek)
(axel and double jumps are forbidden)

Beginners born 1995 -1998
Girls, Boys Free Program: max. 2:30 min (± 10 sek)
(Maximum 1A and 1 double jump are allowed)

Beginners born 1985 -1994
Girls, Boys Free Program: max. 2:30 min (± 10 sek)
(Maximum 1A and 1 double jump are allowed)

Hobby Class

Adults born from 1984 and older
ISU Judging system

Gold ladies and man Free program: max. 2:40 min (± 10 sek)

Silver ladies and man Free program: max. 2:00 min (± 10 sek)

Bronze ladies and man Free program: max. 1:40 min (± 10 sek)

RESULTS:

The results for (A class) Novice and Junior, Senior will be calculated according to ISU judging system using judging panel of 5 judges.

Chicks – Springs (A Class) will be calculated according to Adapted Classification for Youngsters for season 2011/2012 (attached in Appendix 1) using judging panel of 3 judges.

All the B Class categories will be calculated according to „B Group Classification for season 2011/2012“ (2nd part of Appendix 1) using ISU judging syst. (special rules). All the Beginners categories will be calculated according to classification for season 2011/2012 (3rd part of Appendix 1)

Result information and detailed protocols will be available on listed websites:

<http://kristalice.lv>

EXPENSES:

All participants and teams must pay the accommodation and transportation themselves.

OFFICIAL HOTEL:

Official hotel for skaters is
MARITIM PARK HOTEL 4*

Draw and all the information as starting orders, results, protocols will be available there during competitions.

Transfer from hotel till/from icerink and till/from airport will be available for special price.

All the skaters can use parking, fitness and wifi free of charge.

Special prices , using CODE for reservations " KRISTAL ICE 17"

single room - 40 euro
double room - 45 euro
triple room - 65 euro
extra bed - 20 euro
including breakfast

e`mail for reservations : liene@maritim.lv

The „**MARITIM PARK HOTEL**„ 4* (5-10 min from icerink by bus, transfer for additional special price is available);

All rooms are equipped with: air conditioner bath or shower, hair dryer, satellite TV, Internet connection, direct-dial telephone and fridge. The above mentioned rates are in EUR per room per night and they include the following services: Accommodation in required room category, **MARITIM** Breakfast Buffet, Service Charges, VAT, Parking lot.

VISAS:

THE SKATERS AND TEAMS WHO NEEDS VISA HAVE TO SEND THEIR DATA BEFORE 01.01.2012

ICE RINK:

Jurmals Gatve 78 D, Riga, Latvia

